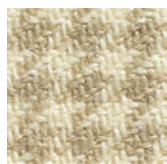


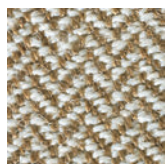
## Troon (CF 752) / Turnberry (CF 751)



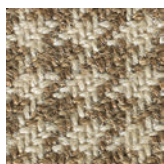
Hersteller	Bute
Zusammensetzung	92% Wolle, 8% Nylon
Gewicht	357 g/m <sup>2</sup>
Zertifikate	<ul style="list-style-type: none"> <li>- Troon - Scheuerfestigkeit - 60000 Martindale Scheuertouren (BS2543, BS EN 14465)</li> <li>- Turnberry - Scheuerfestigkeit - 80000 Martindale Scheuertouren (BS2543, BS EN 14465)</li> <li>- Peelingfestigkeit - 3 (EN ISO 12945-2)</li> <li>- Brandschutz - Zigarettentest (BS EN 1021-1)</li> <li>- Brandschutz - Streichholztest (BS EN 1021-2)</li> <li>- Brandschutz (BS 5852, Crib 5)</li> <li>- Lichtechtheit - 5 (BS ISO 105-B02)</li> </ul>



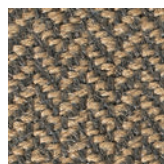
CF 752/0202



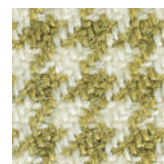
CF 751/0302



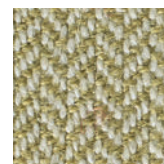
CF 752/3838



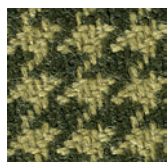
CF 751/1450



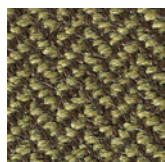
CF 752/1515



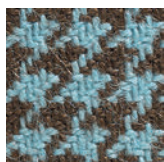
CF 751/1734



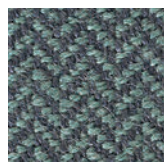
CF 752/2727



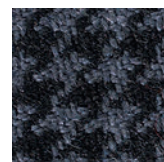
CF 751/1534



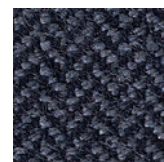
CF 752/2323



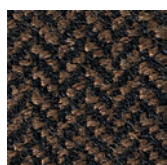
CF 751/1228



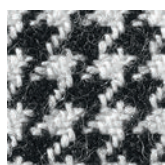
CF 752/0303



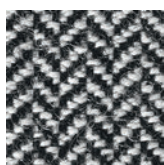
CF 751/0809



CF 751/0104



CF 752/0101



CF 751/0102