

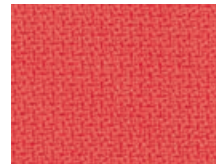
Step: **B**

Zusammensetzung 100 % Trevira CS® (Polyester)
 Gewicht 470 g/m
 Breite 140 cm
 Lichtechtheit Note 5-7 (EN ISO 105-B02)
 Pilling Note 4-5 (EN ISO 12945/2)
 Reibechtheit Nass: 4-5 / trocken: 4-5 (EN ISO 105-X12)
 Scheuerfestigkeit 100.000 Touren (Martindale; EN ISO 12947-2)
 Brandverhalten IMO MSC 307(88) Annex 1 part 8, MED Certificate IMO, DIN 4102 B1, NF-P 92-503/504/505 class M1, BS EN 1021: Teil 1/2, BS EN 1021-1, BS 5852 Part 1 0,1, BS 5852 Crib 5, ÖNORM B 3825-B1-3800-Q1 UK, BS 7176 Medium hazard, AM 18 - NF D 60-013, US CA TB 117-2013, Class Uno UNI 9175 Class 1 I EMME, DIN EN 13501-1 B-s1,d0

Composition 100 % Trevira CS® (polyester)
 Weight 470 g/m
 Width 140 cm
 Light fastness value 5-7 (EN ISO 105-B02)
 Pilling value 4-5 (EN ISO 12945/2)
 Fastness to rubbing wet: 4-5 / dry: 4-5 (EN ISO 105-X12)
 Abrasion resistance 100.000 rubs (Martindale; EN ISO 12947-2)
 Flammability IMO MSC 307(88) Annex 1 part 8, MED Certificate IMO, DIN 4102 B1, NF-P 92-503/504/505 class M1, BS EN 1021: part 1/2, BS EN 1021-1, BS 5852 Part 1 0,1, BS 5852 Crib 5, ÖNORM B 3825-B1-3800-Q1 UK, BS 7176 Medium hazard, AM 18 - NF D 60-013, US CA TB 117-2013, Class Uno UNI 9175 Class 1 I EMME, DIN EN 13501-1 B-s1,d0



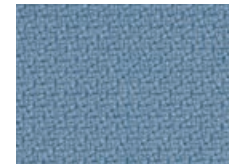
046.004
Currygelb
Curry yellow



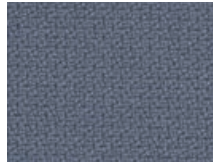
046.140
Koralle
Coral



046.041
Feuerrot
Züco red



046.120
Hellblau
Light blue



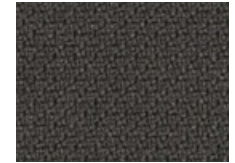
046.121
Stahlblau
Steel blue



046.022
Dunkelblau
Deep blue



046.011
Hellgrün
Vivid green



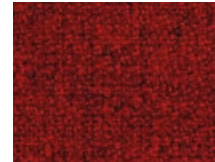
046.036
Antrazitgrau
Asphalt grey



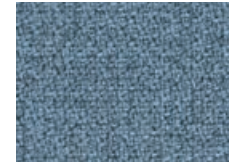
047.004
Currygelb
Curry yellow



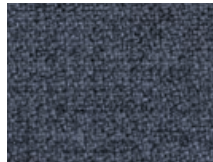
047.140
Koralle
Coral



047.043
Samtrot
Red velvet



047.025
Wasserblau
Lagoon blue



047.121
Stahlblau
Steel blue



047.022
Dunkelblau
Deep blue



047.013
Olivgrün
Olive green



047.037
Vulkangrau
Vulcan grey

046.xxx = Step: **B**
047.xxx = Step Melange: **B**