

Go Couture: B

Zusammensetzung: 100 % Trevira CS® (Polyester)

Gewicht: 435 g/m

Breite: 140 cm

Lichtechtheit: Note 5-8 (EN ISO 105-B02)

Pilling: Note 5 (EN ISO 12945-2)

Reibechtheit: nass: 4-5 / trocken: 4-5
(EN ISO 105-X12)

Scheuerfestigkeit: 80.000 Touren
(Martindale; EN ISO 12947-2)

Brandverhalten: BS EN 1021: Teil 1/2; BS 5852 Part 1 0,1; BS 7176 Medium hazard; BS 5852 Crib 5; DIN 4102 B1; NFP 92-503/504/505 M1; Class Uno UNI 9175 Class 1 I EMME; ÖNORM B 3825-B1-3800-Q1 UK; FAR/JAR 25.853 (a) (i) (ii); US CA TB 117-2013; DIN EN 13501-1 B-s1,d0

Composition: 100 % Trevira CS® (polyester)

Weight: 435 g/m

Width: 140 cm

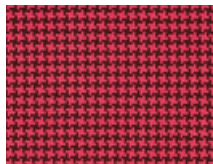
Light fastness: value 5-8 (EN ISO 105-B02)

Pilling: value 5 (EN ISO 12945-2)

Fastness to rubbing: wet: 4-5 / dry: 4-5
(EN ISO 105-X12)

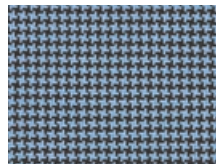
Abrasion resistance: 80.000 rubs
(Martindale; EN ISO 12947-2)

Flammability: BS EN 1021: Teil 1/2; BS 5852 Part 1 0,1; BS 7176 Medium hazard; BS 5852 Crib 5; DIN 4102 B1; NFP 92-503/504/505 M1; Class Uno UNI 9175 Class 1 I EMME; ÖNORM B 3825-B1-3800-Q1 UK; FAR/JAR 25.853 (a) (i) (ii); US CA TB 117-2013; DIN EN 13501-1 B-s1,d0



167.140

Koralle
Coral



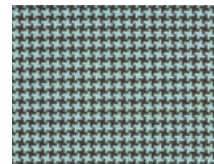
167.120

Hellblau
Light blue



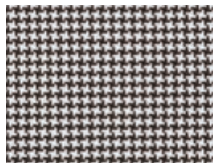
167.028

Marineblau
Navy blue



167.016

Wassergrün
Ice green



167.079

Schwarz und Weiß
Black and White



nur für 1000 classic /
only for 1000 classic