

Tonal: A

Zusammensetzung: 99 % recyceltes Polyester,
1 % Polyester

Gewicht: 315 g/m

Breite: 140 cm

Lichtechtheit: Note 6-8 (EN ISO 105-B02)

Pilling: Note 4-5 (EN ISO 12945/2)

Reibechtheit: nass: 4-5 / trocken: 4-5
(EN ISO 105-X12)

Scheuerfestigkeit: 100.000 Touren
(Martindale; EN ISO 12947-2)

Brandverhalten: US CA TB 117-2013,
ASTM E 84,
BS EN 1021: Teil 1/2,
BS EN 1021-1,
BS 5852 Part 1, 0,1,
BS 476 Part 7, class 1

Composition: 99 % post-consumer recycled
polyester, 1 % polyester

Weight: 315 g/m

Width: 140 cm

Light fastness: value 6-8 (EN ISO 105-B02)

Pilling: value 4-5 (EN ISO 12945/2)

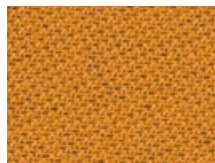
Fastness to rubbing: wet: 4-5 / dry: 4-5
(EN ISO 105-X12)

Abrasion resistance: 100.000 rubs
(Martindale; EN ISO 12947-2)

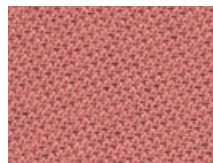
Flammability: US CA TB 117-2013,
ASTM E 84,
BS EN 1021: part 1/2,
BS EN 1021-1,
BS 5852 Part 1, 0,1,
BS 476 Part 7, class 1



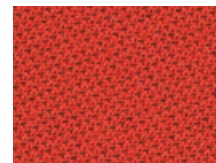
165.004
Currygelb
Curry yellow



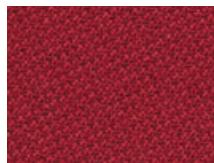
165.044
Orange
Orange



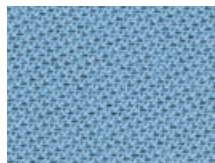
165.046
Pink
Pink orchid



165.047
Mandarine
Mandarine



165.042
Rubinrot
Rubin red



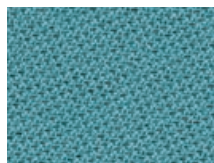
165.025
Wasserblau
Lagoon blue



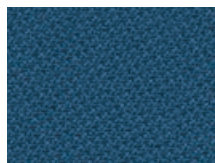
165.011
Hellgrün
Vivid green



165.016
Wassergrün
Ice green



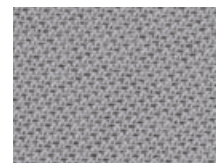
165.018
Opalgrün
Opal green



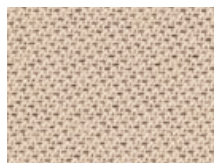
165.014
Petrolgrün
Jade green



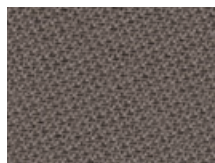
165.031
Platingrau
Platin



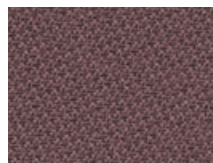
165.030
Grau
Metal grey



165.050
Cappuccino
Cappuccino



165.052
Fango
Fango



165.066
Mittelbraun
Auburn



165.033
Schwarz
Midnight black

