

Relax : A

| | |
|----------------------|---|
| Zusammensetzung: | 100% Trevira CS® (Polyester) |
| Gewicht: | ca. 450g/m |
| Breite: | 140cm |
| Lichtechtheit: | Note 6 (DIN EN ISO 105-B02) |
| Pilling: | Note 5 (DIN EN ISO 12945/2) |
| Reibecktheit: | nass: 4–5 / trocken: 4–5 (DIN EN ISO 105-X12) |
| Scheuerfestigkeit: | 100.000 Touren (Martindale; DIN EN ISO 12947) |
| Brandverhalten: | DIN EN 1021: Teil 1/2, DIN 4102 B1, NF-P 92-503 Klasse M1, BS 5852 IS 0+1, Crib 5, UN2 9175/87 (1. IM) |
| Composition: | 100% Trevira CS® (polyester) |
| Weight: | approx. 450g/m |
| Width: | 140cm |
| Light fastness: | value 6 (DIN EN ISO 105-BO2) |
| Pilling: | value 5 (DIN EN ISO 12945/2) |
| Fastness to rubbing: | wet: 4–5 / dry: 4–5 (DIN EN ISO 105-X12) |
| Abrasion resistance: | 100,000 rubs (Martindale, DIN EN ISO 12947) |
| Flammability: | DIN EN 1021: Part 1/2, DIN 4102 B1, NF-P 92-503 class M1, BS 5852 IS 0+1, Crib 5, UN2 9175/87 (1. IM) |



103.044
Orange
Orange



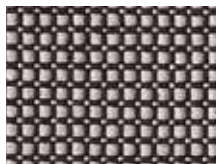
100.041
Feuerrot
Züco red



100.020
Standardblau
Classic blue



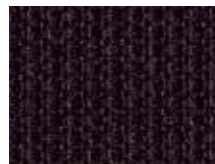
100.010
Grün
Organic green



103.079
Schwarz und Weiß
Black and white



103.039
Javagrau
Java grey



100.033
Schwarz
Midnight black

100.xxx = Relax : A einfarbig | one colour

103.xxx = Relaxbico : A zweifarbig | two-tone



TREVIRA[®]
CS



TEXTILES
VERTRAUEN
| Geprüft auf Schadstoffe
nach Oeko-Tex® Standard 100
073333-0