

# King Plus : A

Zusammensetzung: 100% Trevira CS® (Polyester)  
Gewicht: ca. 365g/m  
Breite: 140cm  
Lichtechtheit: Note 6 (DIN EN ISO 105-BO2)  
Pilling: Note 4–5 (DIN EN ISO 12945/2)  
Reibechtheit: nass: 4–5 / trocken: 4–5  
Scheuerfestigkeit: 80.000 Touren (Martindale; DIN EN ISO 12947)  
Brandverhalten: DIN EN 1021: Teil 1/2, DIN 4102 B1, NF-P 92-503 Klasse M1, BS 5852 IS 0+1, Crib 5, UN2 9175/87 (1. IM)

Composition: 100% Trevira CS® (polyester)  
Weight: approx. 365g/m  
Width: 140cm  
Light fastness: value 6 (DIN EN ISO 105-BO2)  
Pilling: value 4–5 (DIN EN ISO 12945/2)  
Fastness to rubbing: wet: 4–5 / dry: 4–5  
Abrasion resistance: 80,000 rubs (Martindale; DIN EN ISO 12947)  
Flammability: DIN EN 1021: Part 1/2, DIN 4102 B1, NF-P 92-503 class M1, BS 5852 IS 0+1, Crib 5, UN2 9175/87 (1. IM)



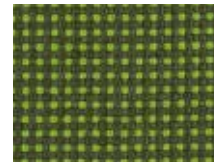
**084.044**  
Orange  
Orange



**084.040**  
Chilliroth  
Chilli red



**084.022**  
Dunkelblau  
Deep blue



**084.011**  
Hellgrün  
Vivid green



**084.030**  
Grau  
Metal grey



**084.033**  
Schwarz  
Midnight black

