

King : A

Zusammensetzung: 100% Trevira CS® (Polyester)
Gewicht: ca. 420g/m
Breite: 140cm
Lichtechtheit: Note 6 (DIN EN ISO 105-BO2)
Pilling: Note 4–5 (DIN EN ISO 12945/2)
Reibechtheit: nass: 4–5 / trocken: 4–5
Scheuerfestigkeit: 100.000 Touren (Martindale; DIN EN ISO 12947)
Brandverhalten: DIN EN 1021: Teil 1/2, DIN 4102 B1, NF-P 92-503 Klasse M1, BS 5852 IS 0+1, Crib 5, UN2 9175/87 (1. IM)
Composition: 100% Trevira CS® (polyester)
Weight: approx. 420g/m
Width: 140cm
Light fastness: value 6 (DIN EN ISO 105-BO2)
Pilling: value 4–5 (DIN EN ISO 12945/2)
Fastness to rubbing: wet: 4–5 / dry: 4–5
Abrasion resistance: 100.000 rubs (Martindale; DIN EN ISO 12947)
Flammability: DIN EN 1021: Part 1/2, DIN 4102 B1, NF-P 92-503 class M1, BS 5852 IS 0+1, Crib 5, UN2 9175/87 (1. IM)



081.044
Orange
Orange



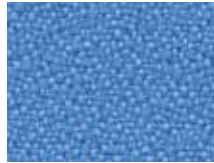
081.041
Feuerrot
Züco red



081.040
Chillirot
Chilli red



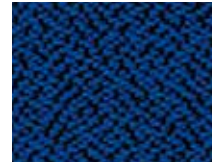
081.042
Rubinrot
Rubin red



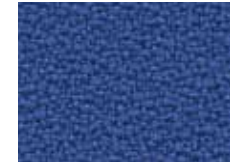
081.120
Hellblau
Light blue



081.021
Azurlblau
Azure blue



081.020
Standardblau
Classic blue



081.025
Wasserblau
Lagoon blue



081.011
Hellgrün
Vivid green



081.010
Grün
Organic green



081.110
Dunkelgrün
Dark green



081.022
Dunkelblau
Deep blue



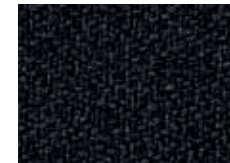
081.031
Platingrau
Platin



081.032
Steingrau
Stone grey



081.030
Grau
Metal grey



081.033
Schwarz
Midnight black



TREVIRA®
CS



DEPARTMENT OF CHEMISTRY
VULCANIZATION
AND POLYMERIZATION
INSTITUTE