

brunner ::

Inspiration 3

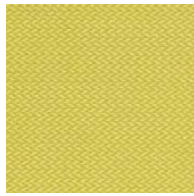
Revive 1+2 (100% recyceltes Polyester . 100% en polyester recyclé . 100% recycled polyester)

Stoffgruppe 2 Tissue groupe 2 Fabric category 2

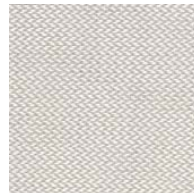
kvadrat



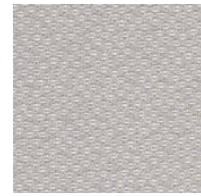
Revive 2
423



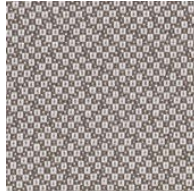
Revive 1
424



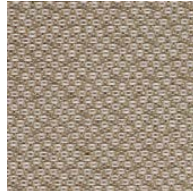
Revive 1
224



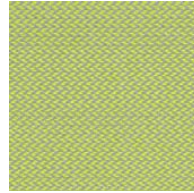
Revive 2
133



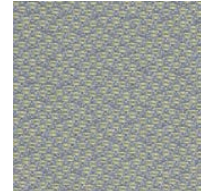
Revive 2
323



Revive 2
223



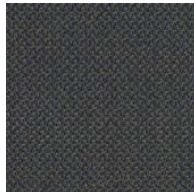
Revive 1
914



Revive 2
923



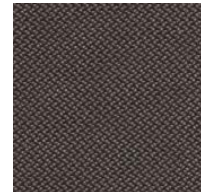
Revive 2
973



Revive 1
974



Revive 2
933



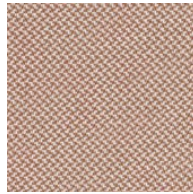
Revive 1
274



Revive 1
434



Revive 2
433



Revive 1
414



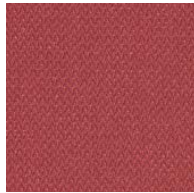
Revive 2
383



Revive 1
384



Revive 2
633



Revive 1
664



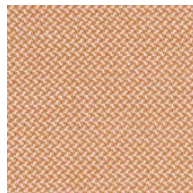
Revive 2
663



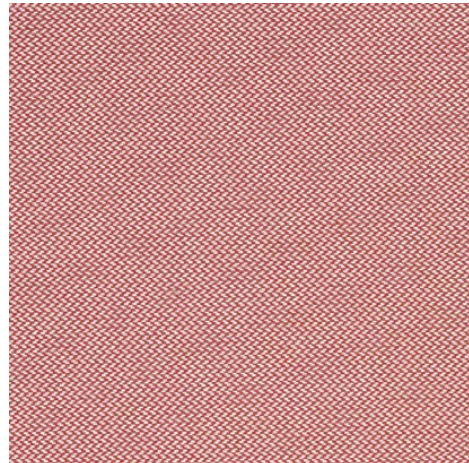
Revive 1
634



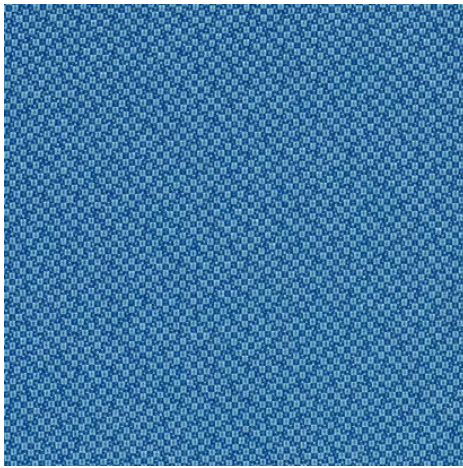
Revive 2
523



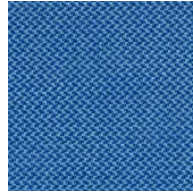
Revive 1
534



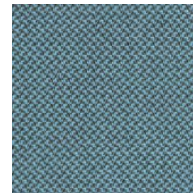
Revive 1
524



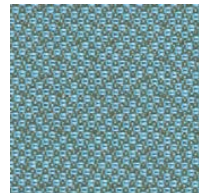
Revive 2
753



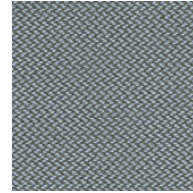
Revive 1
754



Revive 1
834



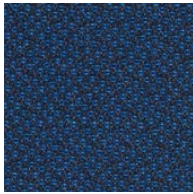
Revive 2
833



Revive 1
944



Revive 2
373



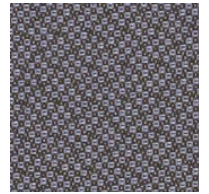
Revive 2
773



Revive 1
774



Revive 1
284



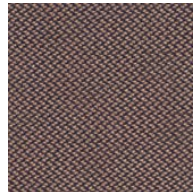
Revive 2
173



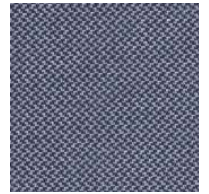
Revive 1
184



Revive 2
453



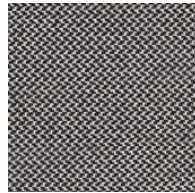
Revive 1
454



Revive 1
764



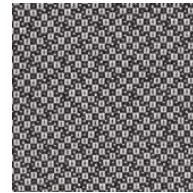
Revive 2
183



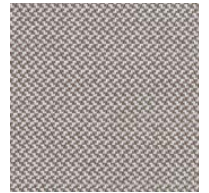
Revive 1
164



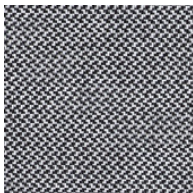
Revive 1
194



Revive 2
163



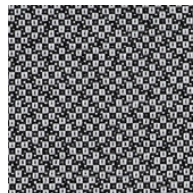
Revive 1
324



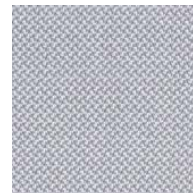
Revive 1
154



Revive 2
193



Revive 2
153



Revive 1
144

Revive 1 Designed by Georgina Wright



Anwendungsbereich Büros, Hotels, Objectbereich, privaten Wohnbereich, Hohe Strapazierfähigkeit

Beschreibung 100% recycled Polyester FR, Breite 140 cm, Gewicht ca. 430 g/lfd.m, Garngefärbt, Farbunterschiede können vorkommen

Webkante ↔

Testergebnisse Scheuerfestigkeit: Ca. 60.000 Scheuerhübe gemäss der Martindale Methode EN ISO 12947. Lichtechtheit: (ISO) 5-7. Pilling: (EN ISO) 4-5. Reibechtheit: (ISO). Trockener 5, Nasser 4-5. Flammschutz: DIN 4102 B1. ÖNORM B1/Q1. EN 1021-1/2. Ignition source 0-1. UNI 9175 11M. US Cal. Bull. 117-2013. IMO A.652(16). (Kopie von Prüfungsbericht verfügbar.)

Pflege Siehe ISO Pflegesymbole. Wascheinlauf ca. 1% bei 60°C

Domaine d'utilisation Tissu d'ameublement pour aménagement privé et public. Grande résistance.

Description 100% polyester FR recyclé. Largeur 140 cm. Poids env. 430 g/m lg. Teinture sur fil. Ecart des coloris possibles.

Liseré de bordure ↔

Tests Résistance à l'abrasion: Env. 60.000 révolutions selon le procédé Martindale EN ISO 12947. Résistance à la lumière: (ISO) 5-7. Boulochage: (EN ISO) 4-5. Résistance au frottement: (ISO) sec 5, mouillé 4-5. Normes au feu: EN 1021-1/2. ignition source 0-1. DIN 4102 B1. ÖNORM B1/Q1. UNI 9175 11M. UNI 9177 Classe 1. US Cal. Bull. 117-2013. IMO A.652(16). (La copie du comptendu des tests est disponible sur demande).

Entretien Voir les symboles ISO. Rétrécissement: Env. 1% pour lavage à 60°C.

Application Offices, hotels, institutions, domestic use. Great durability.

Description 100% recycled polyester FR. Width 55 inches (140 cm). Weight app. 430 g/in.m. Yarn dyed. Colour differences may occur.

Selvedge ↔

Tests Abrasion App. 60.000 rubs acc. to the Martindale method EN ISO 12947. Lightfastness: (ISO) 5-7. Pilling: (EN ISO) 4-5. Fastness to rubbing: (ISO) dry 5, wet 4-5. Flame resistance: EN 1021-1/2. ignition source 0-1. DIN 4102 B1. ÖNORM B1/Q1. UNI 9175 11M. US Cal. Bull. 117-2013. IMO A.652(16). (Copy of test report available).

Care Please see the ISO symbols. Shrinkage app. 1% when washed at 60°C

Revive 2 Designed by Georgina Wright



Anwendungsbereich Büros, Hotels, Objectbereich, privaten Wohnbereich, Hohe Strapazierfähigkeit

Beschreibung 100% recycled Polyester FR, Breite 140 cm, Gewicht ca. 420 g/lfd.m, Garngefärbt, Farbunterschiede können vorkommen

Webkante ↔

Testergebnisse Scheuerfestigkeit: Ca. 60.000 Scheuerhübe gemäss der Martindale Methode EN ISO 12947. Lichtechtheit: (ISO) 5-7. Pilling: (EN ISO) 4-5. Reibechtheit: (ISO) Trockener 5, Nasser 4-5. Flammschutz: DIN 4102 B1. ÖNORM B1/Q1. EN 1021-1/2. Ignition source 0-1. UNI 9175 11M. US Cal. Bull. 117-2013. IMO A.652(16). (Kopie von Prüfungsbericht verfügbar.)

Pflege Siehe ISO Pflegesymbole. Wascheinlauf ca. 1% bei 60°C

Domaine Tissu d'ameublement pour aménagement privé et public. Grande résistance.

Description 100% polyester FR recyclé. Largeur 140 cm. Poids env. 420 g/m lg. Teinture sur fil. Ecart des coloris possibles

Liseré de bordure ↔

Tests Résistance à l'abrasion: Env. 60.000 révolutions selon le procédé Martindale EN ISO 12947. Résistance à la lumière: (ISO) 5-7. Boulochage: (EN ISO) 4-5. Résistance au frottement: (ISO) sec 5, mouillé 4-5. Normes au feu: EN 1021-1/2. ignition source 0-1. DIN 4102 B1. ÖNORM B1/Q1. UNI 9175 11M. UNI 9177 Classe 1. US Cal. Bull. 117-2013. IMO A.652(16). (La copie du compte rendu des tests est disponible sur demande)

Entretien Voir les symboles ISO. Rétrécissement: Env. 1% pour lavage à 60°C.

Application Offices, hotels, institutions, domestic use. Great durability.

Description 100% recycled polyester FR. Width 55 inches (140 cm). Weight app. 420 g/in.m. Yarn dyed. Colour differences may occur.

Selvedge ↔

Tests Abrasion App. 60.000 rubs acc. to the Martindale method EN ISO 12947. Lightfastness: (ISO) 5-7. Pilling: (EN ISO) 4-5. Fastness to rubbing: (ISO) dry 5, wet 4-5. Flame resistance: EN 1021-1/2. ignition source 0-1. DIN 4102 B1. ÖNORM B1/Q1. UNI 9175 11M. US Cal. Bull. 117-2013. IMO A.652(16). (Copy of test report available).

Care Please see the ISO symbols. Shrinkage app. 1% when washed at 60°C