

brunner ::

classic . newport

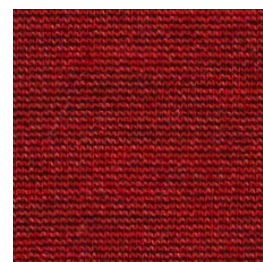
Stoffgruppe 6 Tissu groupe 6 Fabric category 6

newport

Stoffgruppe 6
Tissu groupe 6
Fabric category 6



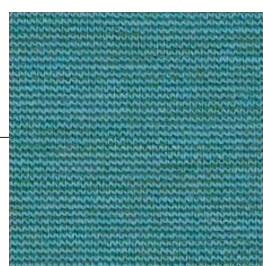
6/6398



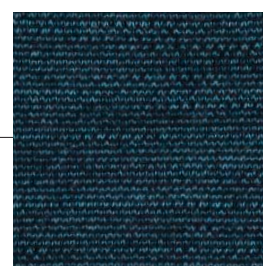
6/6345



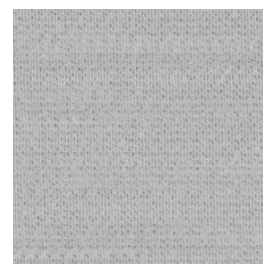
6/6363



6/6376



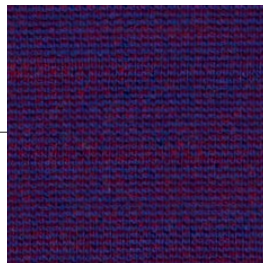
6/6379



6/6390



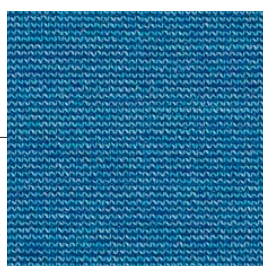
6/6357



6/6356



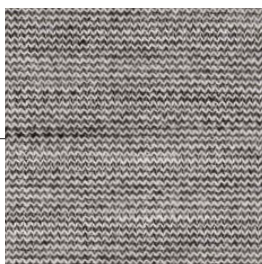
6/6377



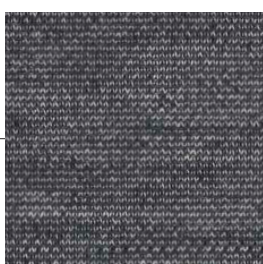
6/6378



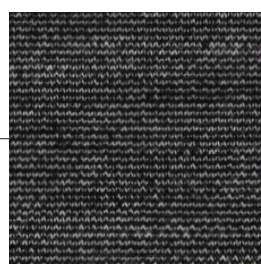
6/6380



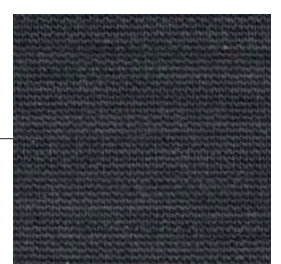
6/6392



6/6394



6/6397



6/6398

newport

Stoffgruppe 6

Material Oberseite: 68% Wolle / 22% Polyamid / 10% Polyester
Material Unterseite: 2 mm – 28 kg/m³ flammhemmender PU-Schaum
Gewicht: 490 g/m² (+/- 5%)
Rollenbreite: 165 cm (+/- 2%)
Scheuerfestigkeit: > 80.000
Martindale – DIN EN ISO 12947-2
Pilling: EN ISO 12945-2 – Stufe 4 (5.000)
Reibechtheit: EN ISO 105-X12 – trocken / nass – Stufe 4-5 / 4-5
Lichtechtheit: EN ISO 105-B02 – Stufe 6
Feuersicherung: DIN 4102-B2, EN 1021-1/2, BS 5852 part 1, US Cal. Tech. Bull. 117, IMO FTP Code part 8
Auf Anfrage: Feuersicherung M1 / Crib 5 + flecken- und schmutzabweisend.
Umwelt: Oeko-Tex® standard 100.
Alle verwendeten Chemikalien sind unter der REACH-Verordnung registriert. Ökologische Herstellung.
Qualität: Es können kleine Farbunterschiede auftreten. Fremdfasern können in hellen Farben auftreten.



Tissu groupe 6

Surface du tissu : 68% laine / 22% polyamide / 10% polyester
Dessous : 2 mm – 28 kg/m³ – mousse PU retardateur de flamme
Poids : 490 g/m² (+/- 5%)
Largeur : 165 cm (+/- 2%)
Résistance à l'abrasion : > 80.000 tours
Martindale – DIN EN ISO 12947-2
Boulochage: EN ISO 12945-2 – niveau 4 (5.000)
Résistance au frottement : EN ISO 105-X12 – sec / humide – niveau 4-5 / 4-5
Solidité à la lumière : EN ISO 105-B02 – niveau 6
Classement feu : DIN 4102-B2, EN 1021-1/2, BS 5852 part 1, US Cal. Tech. Bull. 117, IMO FTP Code part 8
Sur demande : classement feu M1 / Crib 5 + anti taches
Environnement : Eco-Tex® standard 100
Tous les produits chimiques utilisés sont conformes à la réglementation REACH. Fabrication écologique
Qualité : de légères nuances de couleurs peuvent apparaître – dans les couleurs claires, des fibres étrangères sont possibles.



Fabric category 6

Material topside: 68% wool / 22% polyamide / 10% polyester
Material underside: 2 mm – 28 kg/m³ flame retardant PU-foam
Weight: 490 g/m² (+/- 5%)
Roll width: 165 cm (+/- 2%)
Abrasion resistance: > 80.000
Martindale – DIN EN ISO 12947-2
Pilling: EN ISO 12945-2 – level 4 (5.000)
Fastness to rubbing: EN ISO 105-X12 – dry / wet – level 4-5 / 4-5
Light fastness: EN ISO 105-B02 – level 6
Flammability: DIN 4102-B2, EN 1021-1/2, BS 5852 part 1, US Cal. Tech. Bull. 117, IMO FTP Code part 8
Treatment upon request: Flammability M1 / Crib 5 + soil and stain resistance
Environment: Oeko-Tex® standard 100
All chemicals used are registered under the REACH legislation.
Ecologically produced.
Quality: Slight differences in colour may occur. Foreign fibres may occur in light colours.

