

Grano



Design
Climatex

Farben / Colours
18

Material Composition **Composizione** **Composition**
69 % PA
18 % WO
13 % CV

Nutzbreite / Nominal Width
141 cm

Gewicht / Weight
450 g/lfm

Scheuerfestigkeit / Abrasion resistance
465.000 Martindale, EN ISO 12947-2

Pilling
4, EN ISO 12945-2

Lichtechtheit / Light fastness
6, EN ISO 105-B02

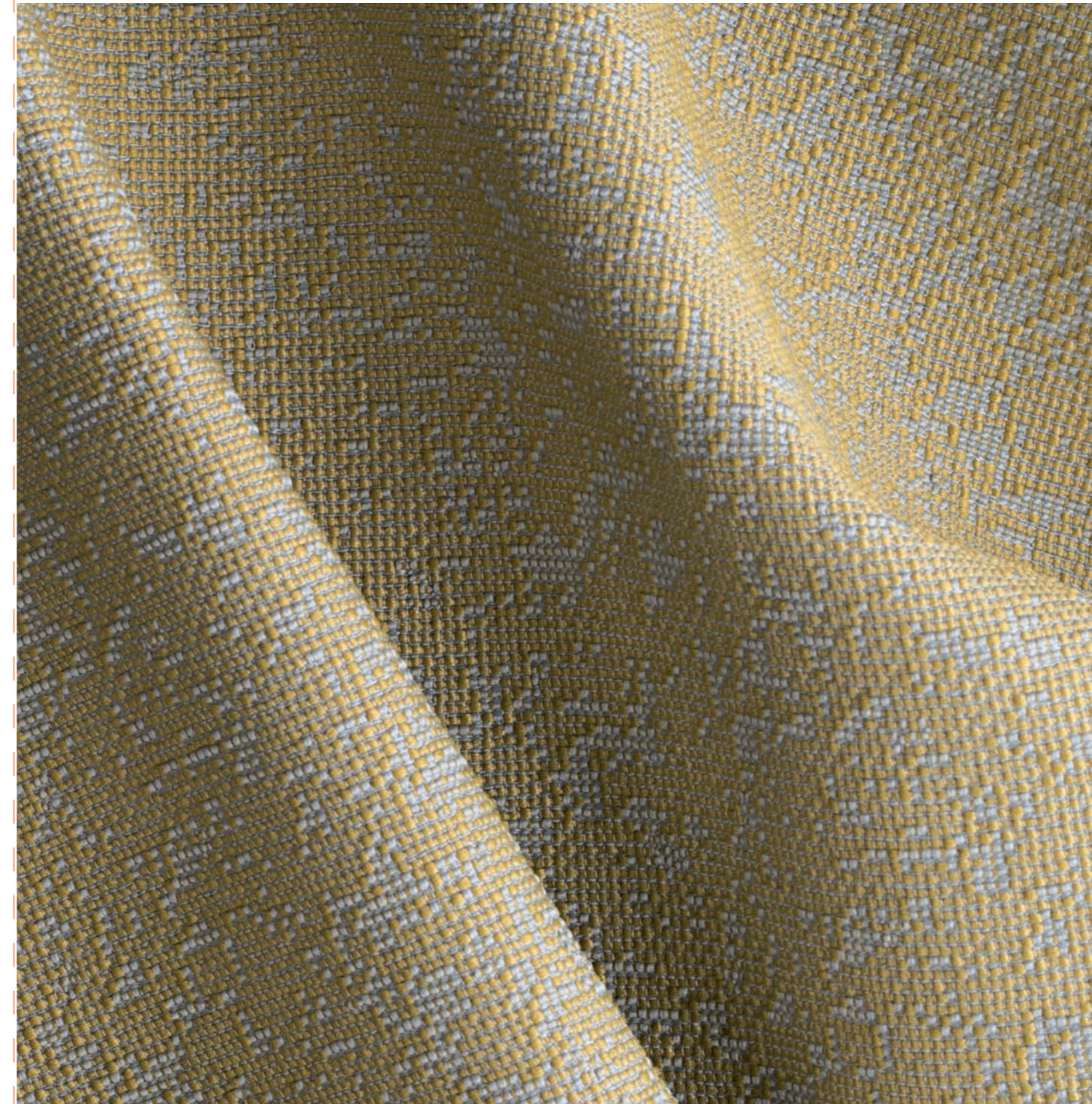
Reibechtheit / Rub fastness
dry 4 - 5, wet 4, EN ISO 105-X12

Brandnormen / Fire standards
EN 1021-1/2
BS 5852-0/1
California TB 117, Class 1

Pflege / Care



Grano



Printed in Cradle to Cradle®-process on Cradle to Cradle®-paper

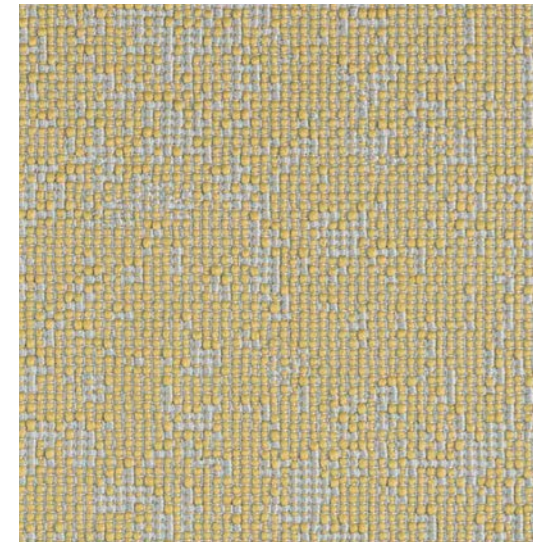
Grano



JAB JOSEF ANSTOETZ KG
Potsdamer Str. 160
D-33719 Bielefeld
Tel.: +49 (0)5 21 / 20 93-636
E-mail: climatex@jab.de



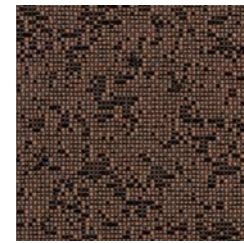
Grano



CX1056-030



CX1056-020



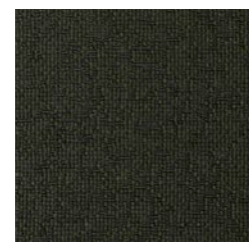
CX1056-021



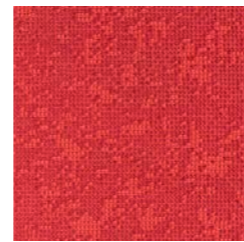
CX1056-070



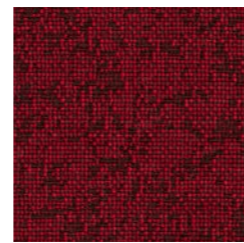
CX1056-022



CX1056-031



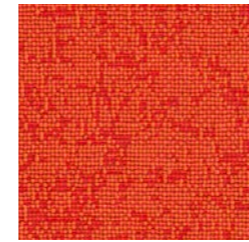
CX1056-010



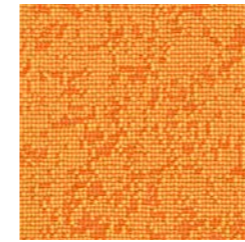
CX1056-011



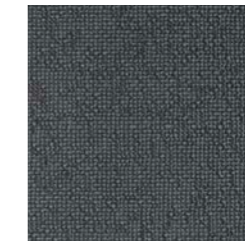
CX1056-012



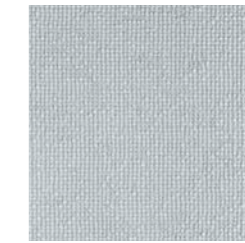
CX1056-061



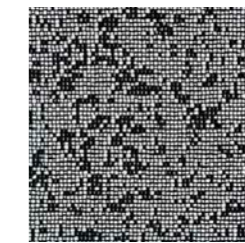
CX1056-060



CX1056-092



CX1056-091



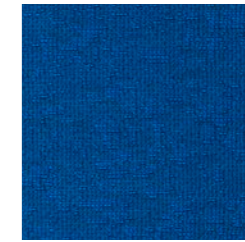
CX1056-093



CX1056-094



CX1056-099



CX1056-050



CX1056-051