

tessuto / fabric / Stoff / tissu / tejido

Cat D - Steelcut 2 KVADRAT

Design

Frans Dijkmeijer
Giulio Ridolfo

Application

Offices, hotels,
institutions, domestic use.
Great durability

Description

Composition:
90% new wool, 10% nylon
Yarn type: Stapel, worsted
Binding: Semi-plain

Width: 140 cm

Weight: app. 825 g/lin.m

Tests

Abrasion
App. 100.000 Martindale rubs,
EN ISO 12947

Pilling
Note 3-4, EN ISO 12945

Light fastness
Note 5-7, ISO 105-B02

Flame resistance

EN 1021-1/2
BS 5852, ignition source 2
DIN 4102 B2
Onorm B1/Q1
Italian Class 1IM
US Cal. Tech. Bull. 117
IMO A.652(16)

Care

Vacuuming and dry cleaning.

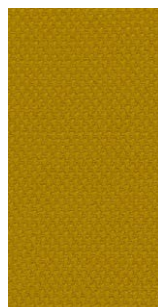
Samples are purely indicative because of natural inconsistencies that occur in the raw materials. As a result there may be small differences in the product delivered.



0575/13



435



445



240



255



365



135



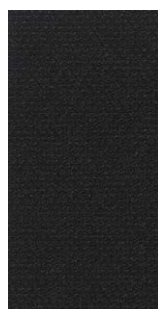
370



625



685



190



180



155



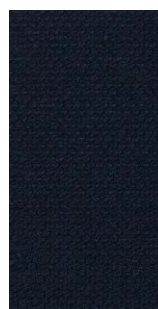
120



820



835



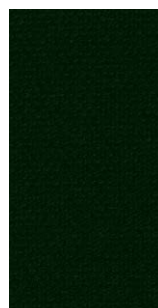
775



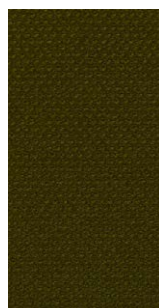
760



780



975



985



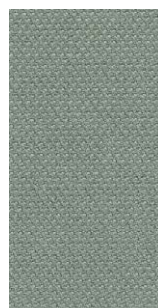
950



935



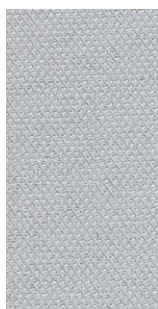
265



160

tessuto / fabric / Stoff / tissu / tejido

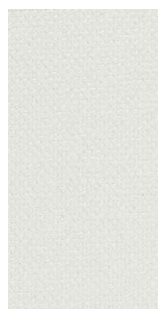
Cat D - Steelcut 2 KVADRAT



140



220



110



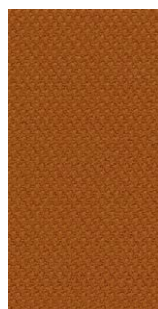
380



695



655



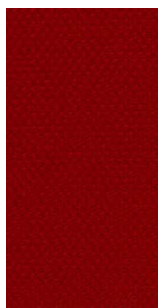
535



550



660



635



545



605



615