

tessuto / fabric / Stoff / tissu / tejido

Cat C - Hallingdal 65 KVADRAT

**Design**

Nanna Ditzel

**Application**

Offices, hotels,  
institutions, domestic use.  
Great durability

**Description**

Composition:  
70% new wool, 30% viscose

Yarn type: Stapel

Binding: Plain

Width: 130 cm

Weight: app. 795 g/lin.m

Samples are purely indicative because of natural inconsistencies that occur in the raw materials. As a result there may be small differences in the product delivered.

**Tests**

Abrasion  
App. 100.000 Martindale rubs  
EN ISO 12947

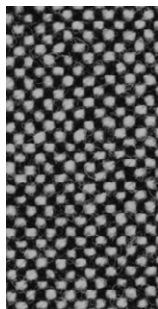
Pilling  
Note 3, EN ISO 12945

Light fastness  
Note 5-7, ISO 105-B02

Flame resistance  
EN 1021-1/2  
BS 5852, ignition source 2-5  
DIN 4102 B2  
Onorm B1/Q1  
UNI 9175/UNI 9176, 1IM  
US Cal. Tech. Bull. 117  
IMO A.652(16)

**Care**

Dry clean or clean with foam  
detergents.



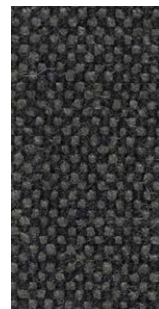
166



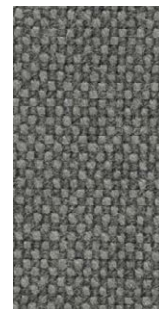
190



180



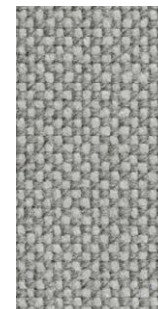
173



153



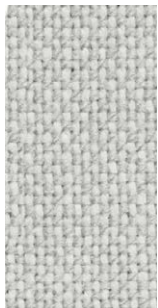
143



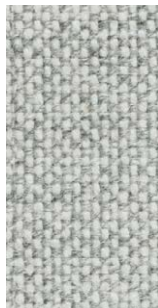
123



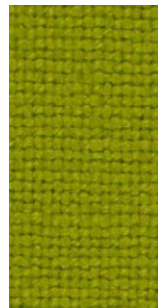
113



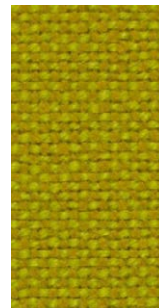
103



110



907



420



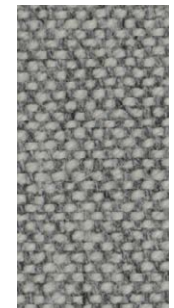
457



407



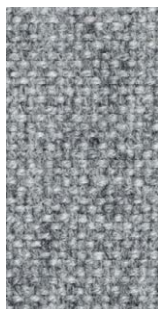
100



116



126



130



227



224



220



200



270



350

tessuto / fabric / Stoff / tissu / tejido

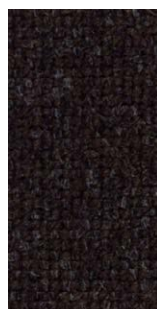
Cat C - Hallingdal 65 KVADRAT



370



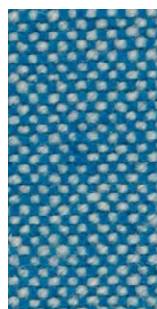
368



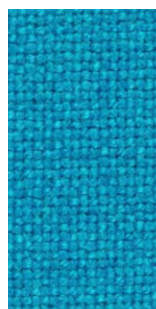
376



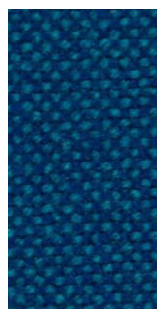
390



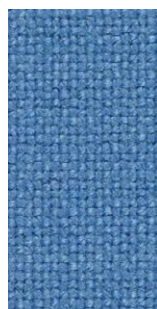
840



850



810



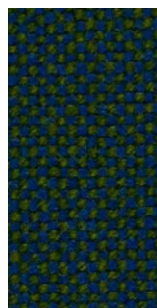
723



733



750



890



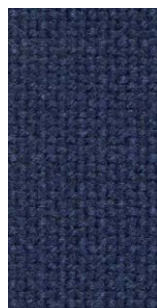
753



754



773



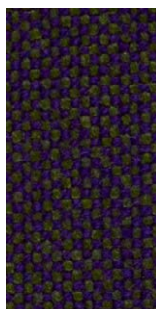
764



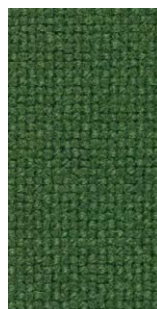
763



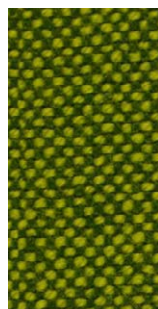
702



968



944



980



960



660



563



573



694



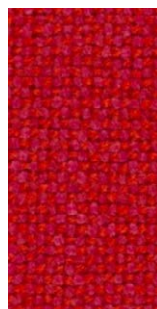
687



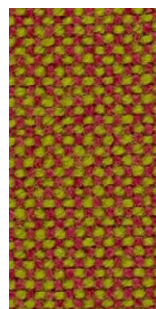
657



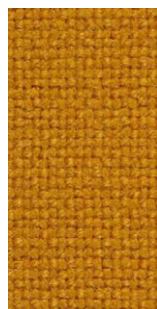
674



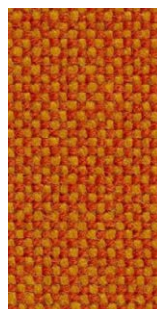
680



526



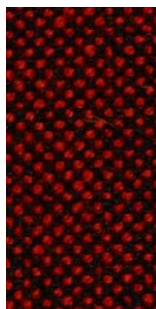
547



590



600



596