

tessuto / fabric / Stoff / tissu / tejido

Cat C - Fiord 2 KVADRAT

**Design**

Louise Sigvardt & Tone Barnung

**Application**

Offices, hotels, institutions, domestic use.

**Description**

Composition:  
92% new wool, 8% nylon  
Yarn type: Worsted  
Binding: Dobby  
Width: App. 140 cm (app. 55 inches)  
Weight: App. 500 g/lin.m

**Tests**

Abrasion  
App. 60.000 Martindale rubs  
EN ISO 12947

Pilling  
Note 4-5, EN ISO 12945

Light fastness  
Note 5-7, ISO 105-B02

Flame resistance  
EN 1021-1/2  
BS 5852 part 1  
DIN 4102 B2  
NF D 60 013  
UNI 9175 1IM  
US Cal. Bull. 117-2013  
IMO FTP Code 2010:Part 8  
With flame retardant treatment:  
BS 5852 Crib 5

**Care**

Vacuuming and dry cleaning

Samples are purely indicative because of natural inconsistencies that occur in the raw materials. As a result there may be small differences in the product delivered.



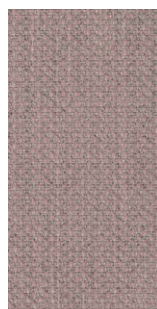
Cat C - Fiord 2 KVADRAT



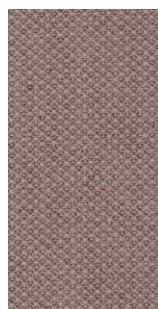
662



642



521



551



581



571



562



672



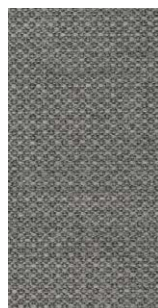
201



101



251



151



171



121



191