

# tessuto / fabric / Stoff / tissu / tejido

## Cat C - Clara 2 KVADRAT

### Design

Anne Birgitte Hansen

### Application

Offices, hotels, institutions, domestic use.

### Description

Composition:  
92% new wool worsted, 8% nylon  
Yarn type: Staple, worsted  
Binding: Semi-plain weave  
Width: 138 cm  
Weight: app. 400 g/lin.m

### Tests

Abrasion  
App. 80.000 Martindale rubs,  
EN ISO 12947

Pilling  
Note 4, EN ISO 12945

Light fastness  
Note 5-7, ISO 105-B02

Flame resistance  
EN 1021-1/2  
BS 5852, ignition source 2-3  
DIN 4102 B2  
NF D 60 013  
UNI 9175 11M  
US Cal. Tech. Bull. 117, Sec. E  
NFPA 260  
IMO A.652(16)

### Care

Vacuuming and dry cleaning.

Samples are purely indicative because of natural inconsistencies that occur in the raw materials. As a result there may be small differences in the product delivered.



384



388



277



273



248



244



188



184



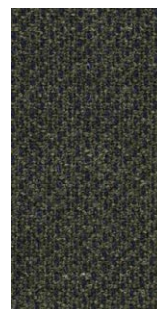
148



144



797



793



937



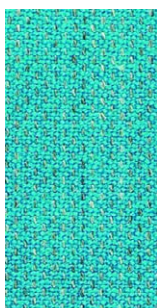
933



983



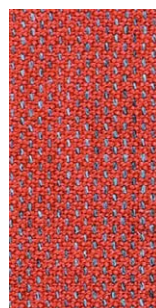
987



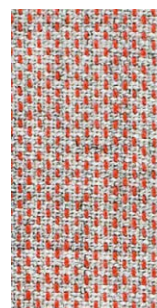
888



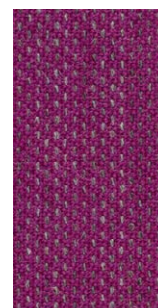
884



548



544



647



643



427



423