

tessuto / fabric / Stoff / tissu / tejido

Cat C - Canvas 2 KVADRAT

Design

Giulio Ridolfo

Application

Offices, hotels,
institutions, domestic use.

Description

Composition:
90% new wool, 10% nylon
Yarn type: Worsted
Binding: Semi-plain weave
Width: 140 cm
Weight: app. 480 g/lin.m

Tests

Abrasion
App. 100.000 Martindale rubs
EN ISO 12947

Pilling
Note 4-5, EN ISO 12945

Light fastness
Note 5-7, ISO 105-B02

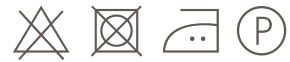
Flame resistance

EN 1021-1/2
BS 5852 part 1
BS 5852, ignition source 2-3
DIN 4102 B2
Önorm B1/Q1
NF D 60 013
UNI 9175, 1IM
US Cal. Tech. Bull. 117
IMO A.652(16)

Care

Dry clean or clean with foam
detergents.

Samples are purely indicative because of
natural inconsistencies that occur in the
raw materials. As a result there may be
small differences in the product delivered.



114



224



244



264



174



154



134



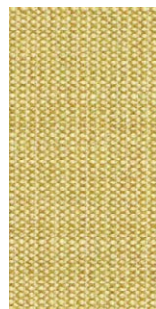
124



216



414



446



926



946



954



964



424



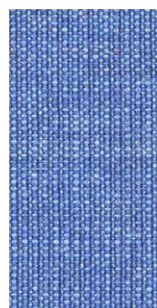
716



836



726



746



666



734



786



794

tessuto / fabric / Stoff / tissu / tejido

Cat C - Canvas 2 KVADRAT



684



764



854



996



974



984



364



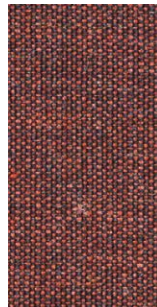
674



694



654



576



644



356



614



566



546



556



454



254



936



374