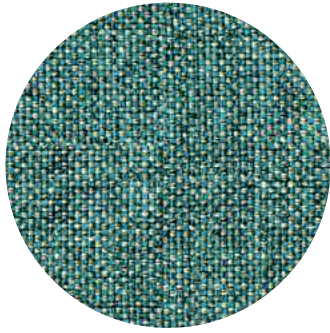


# Camira Rivet | category 0



## Application

Task Seating / Soft Seating

## Composition

100% REPREVE® Recycled Polyester

## Width

140 cm minimum

## Weight

280 g/m2 ±5%

## Flame resistance

California Technical Bulletin 117 - 2013

NFPA 260 + UFAC Class 1

BS 7176 Low Hazard

ASTM E84 - Class 2 or B (Adhered)

ASTM E84 - Class 1 or A (Un-adhered)

UL 723

BS 7176 Medium Hazard with EnviroFlam5

## Cleaning

Vacuum regularly. Wipe with a damp cloth using soap and water or use proprietary upholstery shampoo.

For deeper cleaning use steam, bleach, alcohol professionally dry clean.

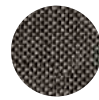
Can be washed at 140°F.

## Colours

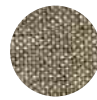
Colours can differ from image, for a true colour perspective and up to date colour card, please visit the brand website.



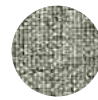
EGL49



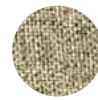
EGL36



EGL25



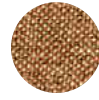
EGL01



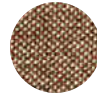
EGL04



EGL03



EGL14



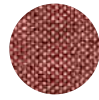
EGL13



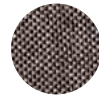
EGL09



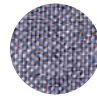
EGL32



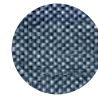
EGL12



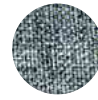
EGL33



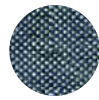
EGL08



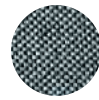
EGL24



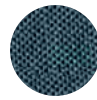
EGL20



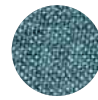
EGL27



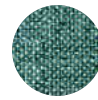
EGL48



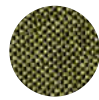
EGL35



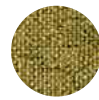
EGL23



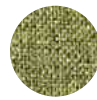
EGL21



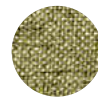
EGL31



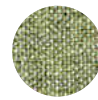
EGL10



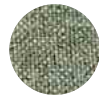
EGL07



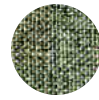
EGL05



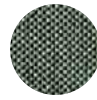
EGL11



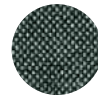
EGL15



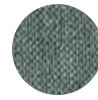
EGL19



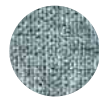
EGL34



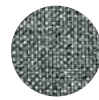
EGL37



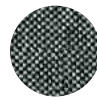
EGL26



EGL16



EGL18



EGL50